

# \$539,900 - 21028 128 Avenue, Edmonton

MLS® #E4431702

**\$539,900**

3 Bedroom, 2.50 Bathroom, 1,701 sqft  
Single Family on 0.00 Acres

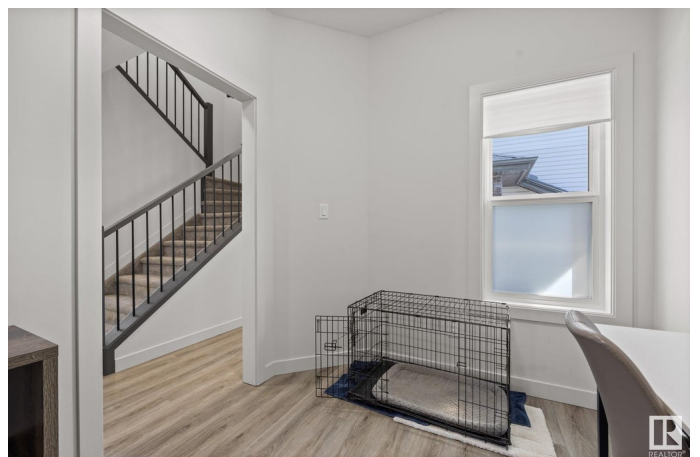
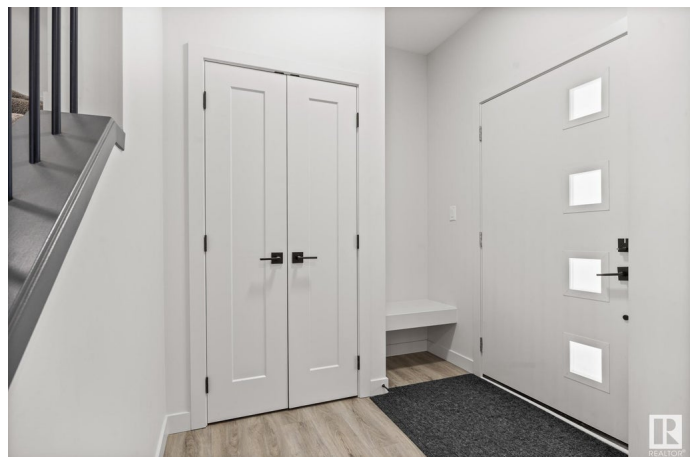
Trumpeter Area, Edmonton, AB

Have you been looking for a great family home steps to Big Lake, St. Albert, & the accessibility of the Henday at a GREAT VALUE?! Welcome to this stunning 3 bedroom + main floor den home in the sought-after community of Trumpeter with SIDE ENTRY! BACKING ONTO A PARK, you'll enjoy peaceful views as you look out into GREEN-SPACE (rather than another house)! Step inside to 1700 sqft of modern living space featuring a bright, open layout, a chef's kitchen with sleek two-tone cabinetry, premium appliances, & elegant finishings throughout. The spacious bonus room adds flexible living space for a home office, playroom, or cozy movie nights. Unwind in your relaxing primary suite complete with spa-like 4pc ensuite with double sinks! Outside, enjoy summer evenings on your finished deck overlooking your fully landscaped yard—ready for entertaining or relaxing. This is the one you've been waiting for—beautifully finished, move-in ready, & perfectly located. Welcome home!

Built in 2023

## Essential Information

MLS® #	E4431702
Price	\$539,900
Bedrooms	3



Bathrooms	2.50
Full Baths	2
Half Baths	1
Square Footage	1,701
Acres	0.00
Year Built	2023
Type	Single Family
Sub-Type	Detached Single Family
Style	2 Storey
Status	Active

### **Community Information**

Address	21028 128 Avenue
Area	Edmonton
Subdivision	Trumpeter Area
City	Edmonton
County	ALBERTA
Province	AB
Postal Code	T5S 0R5

### **Amenities**

Amenities	Ceiling 9 ft.
Parking Spaces	2
Parking	Double Garage Attached

### **Interior**

Interior Features	ensuite bathroom
Appliances	Dishwasher-Built-In, Dryer, Garage Opener, Hood Fan, Refrigerator, Stove-Electric, Washer
Heating	Forced Air-1, Natural Gas
Fireplace	Yes
Fireplaces	Insert
Stories	2
Has Basement	Yes
Basement	Full, Unfinished

### **Exterior**

Exterior	Wood, Vinyl
Exterior Features	Backs Onto Park/Trees

Roof	Asphalt Shingles
Construction	Wood, Vinyl
Foundation	Concrete Perimeter

### **Additional Information**

Date Listed	April 18th, 2025
-------------	------------------

Days on Market	3
----------------	---

Zoning	Zone 59
--------	---------

DATA IS DEEMED RELIABLE BUT IS NOT GUARANTEED ACCURATE BY THE REALTORS® ASSOCIATION OF EDMONTON. COPYRIGHT 2025 BY THE REALTORS® ASSOCIATION OF EDMONTON. ALL RIGHTS RESERVED. Trademarks are owned or controlled by the Canadian Real Estate Association (CREA) and identify real estate professionals who are members of CREA (REALTOR®, REALTORS®) and/or the quality of services they provide (MLS®, Multiple Listing Service®)

Listing information last updated on April 21st, 2025 at 11:47am MDT