

Courtesy Of Jamie M Savage Of RE/MAX Excellence

\$529,900 - 14311 106b Avenue, Edmonton

MLS® #E4431212

\$529,900

4 Bedroom, 2.00 Bathroom, 1,126 sqft

Single Family on 0.00 Acres

Grovenor, Edmonton, AB

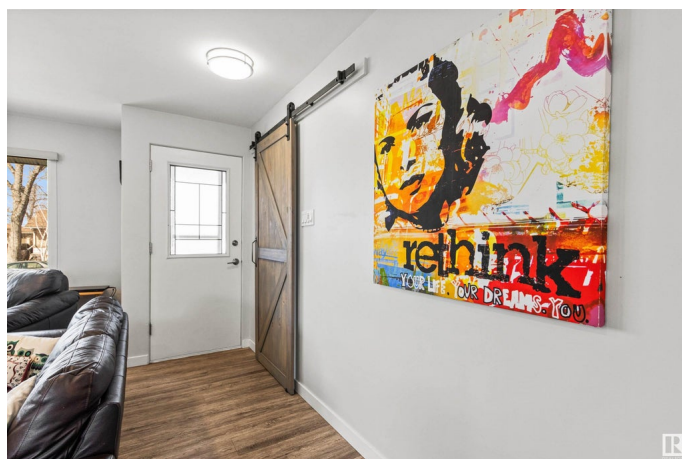
Look no further! This renovated 1,125 sq ft, 4 bed, 2 bath bungalow is situated on a quiet crescent, in the sought-after community of Grovenor. The main floor of this stunning home has been fully transformed, featuring an open-concept with luxury vinyl plank flooring throughout, a barn door closet, & an abundance of pot lights. You'll appreciate the soft-close contemporary kitchen cabinetry, elegant quartz countertops, stainless steel appliances, & the beautiful island featuring a butcher block top with additional storage underneath. The primary bedroom is generous in size. Two more bedrooms & a remodeled 4pc bath rounds out the main. The finished basement includes a large rec room, 4th bed & a 3 pc bath. The laundry room with new washer & dryer completes the basement. Relax on the large south-facing deck surrounded by mature trees & shrubs. Oversized single garage with a carport offers lots of parking. Minutes to downtown & walking distance to great schools, parks, cafes & restaurants!

Built in 1955

Essential Information

MLS® # E4431212

Price \$529,900



Bedrooms	4
Bathrooms	2.00
Full Baths	2
Square Footage	1,126
Acres	0.00
Year Built	1955
Type	Single Family
Sub-Type	Detached Single Family
Style	Bungalow
Status	Active

Community Information

Address	14311 106b Avenue
Area	Edmonton
Subdivision	Grovenor
City	Edmonton
County	ALBERTA
Province	AB
Postal Code	T5N 1G1

Amenities

Amenities	Air Conditioner, Deck
Parking Spaces	2
Parking	Single Carport, Single Garage Detached

Interior

Appliances	Air Conditioning-Central, Dishwasher-Built-In, Dryer, Oven-Microwave, Refrigerator, Stove-Electric, Washer, Window Coverings
Heating	Forced Air-1, Natural Gas
Stories	2
Has Basement	Yes
Basement	Full, Finished

Exterior

Exterior	Wood, Brick, Stucco, Vinyl
Exterior Features	Back Lane, Playground Nearby, Public Transportation, Schools, Shopping Nearby, Treed Lot
Roof	Asphalt Shingles
Construction	Wood, Brick, Stucco, Vinyl

Foundation Concrete Perimeter

Additional Information

Date Listed April 16th, 2025

Days on Market 4

Zoning Zone 21

DATA IS DEEMED RELIABLE BUT IS NOT GUARANTEED ACCURATE BY THE REALTORS® ASSOCIATION OF EDMONTON. COPYRIGHT 2025 BY THE REALTORS® ASSOCIATION OF EDMONTON. ALL RIGHTS RESERVED.Trademarks are owned or controlled by the Canadian Real Estate Association (CREA) and identify real estate professionals who are members of CREA (REALTOR®, REALTORS®) and/or the quality of services they provide (MLS®, Multiple Listing Service®)

Listing information last updated on April 20th, 2025 at 8:32am MDT