

\$565,000 - 2837 33 Street, Edmonton

MLS® #E4431123

\$565,000

4 Bedroom, 3.00 Bathroom, 1,257 sqft

Single Family on 0.00 Acres

Silver Berry, Edmonton, AB

Immaculate walkout bungalow backing onto a pond & walking trails with over 2,400 sq ft of developed living space! This 4-bedroom, 3-bath home is loaded with upgrades & shows like a showhome. The open-concept main floor features a gorgeous kitchen with island, spacious dining area, & a bright living room with large windows offering stunning views. Enjoy your morning coffee on the covered deck overlooking the peaceful pond. The main floor also includes a beautiful primary suite with walk-in closet & 3-pce. ensuite, a second bedroom or office, full bath, & convenient laundry. The fully finished walkout basement offers a massive family room, 2 more bedrooms, a full bath, & access to the covered patio & landscaped yard. Updates include luxury vinyl plank flooring, new carpet, central A/C, & an oversized double attached garage. Located near walking trails, parks, shopping, schools & with quick access to major roadways. Must be seen to be truly appreciated.

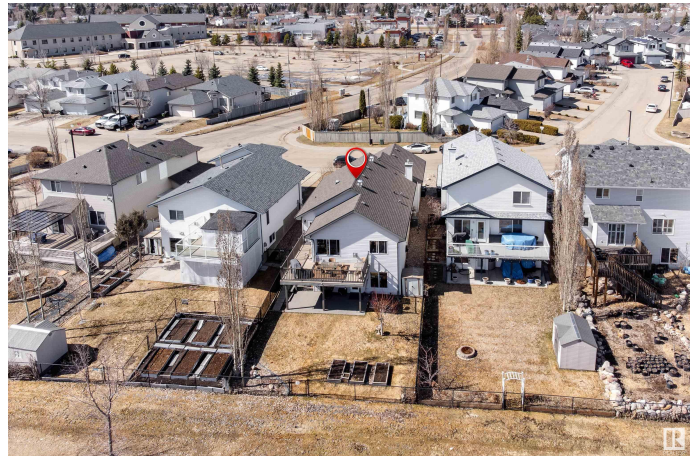
Built in 2003

Essential Information

MLS® # E4431123

Price \$565,000

Bedrooms 4



Bathrooms	3.00
Full Baths	3
Square Footage	1,257
Acres	0.00
Year Built	2003
Type	Single Family
Sub-Type	Detached Single Family
Style	Bungalow
Status	Active

Community Information

Address	2837 33 Street
Area	Edmonton
Subdivision	Silver Berry
City	Edmonton
County	ALBERTA
Province	AB
Postal Code	T6T 1P5

Amenities

Amenities	Air Conditioner, Deck, Exterior Walls- 2"x6", Walkout Basement
Parking	Double Garage Attached, Over Sized

Interior

Interior Features	ensuite bathroom
Appliances	Air Conditioning-Central, Dishwasher-Built-In, Dryer, Fan-Ceiling, Garage Control, Garage Opener, Microwave Hood Fan, Refrigerator, Storage Shed, Stove-Electric, Washer, Window Coverings
Heating	Forced Air-1, Natural Gas
Stories	2
Has Basement	Yes
Basement	Full, Finished

Exterior

Exterior	Wood, Brick, Vinyl
Exterior Features	Fenced, Landscaped, Park/Reserve, Playground Nearby, Public Transportation, Schools, Shopping Nearby, See Remarks
Roof	Asphalt Shingles
Construction	Wood, Brick, Vinyl

Foundation Concrete Perimeter

Additional Information

Date Listed April 16th, 2025

Days on Market 4

Zoning Zone 30

DATA IS DEEMED RELIABLE BUT IS NOT GUARANTEED ACCURATE BY THE REALTORS® ASSOCIATION OF EDMONTON. COPYRIGHT 2025 BY THE REALTORS® ASSOCIATION OF EDMONTON. ALL RIGHTS RESERVED.Trademarks are owned or controlled by the Canadian Real Estate Association (CREA) and identify real estate professionals who are members of CREA (REALTOR®, REALTORS®) and/or the quality of services they provide (MLS®, Multiple Listing Service®)

Listing information last updated on April 20th, 2025 at 8:17am MDT