

\$539,900 - 130 Chestermere Crescent, Sherwood Park

MLS® #E4430379

\$539,900

3 Bedroom, 2.50 Bathroom, 1,729 sqft

Single Family on 0.00 Acres

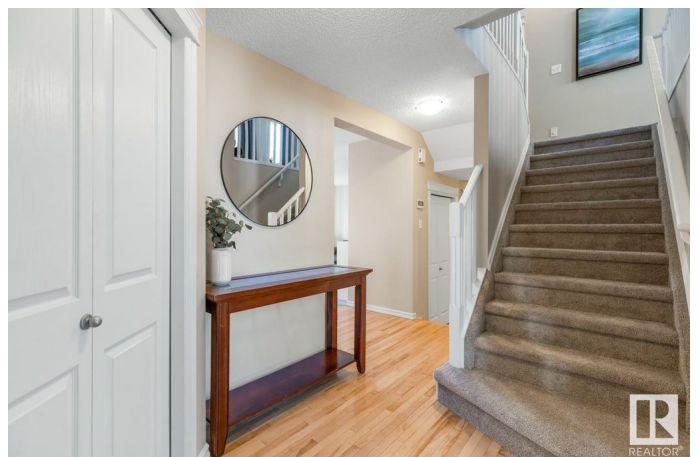
Lakeland Ridge, Sherwood Park, AB

Beautifully maintained family home located in Lakeland Ridge, just steps away from an array of amenities, featuring AC, 3 bedrooms, 2.5 baths, NEW ROOF, plus fresh paint & carpet! You are invited in to find a bright & spacious entry with hardwood floors that lead to the great room. The kitchen offers plenty of cabinets, corner pantry & island that looks over the dining & living room. Complementing the functional layout is a guest bath & main floor laundry. Moving upstairs you will LOVE the family sized bonus room with cozy fireplace. King sized primary suite with walk in closet & ensuite with soaker tub. 2 generous sized bedrooms & 4pc bath complete the upper level. The basement is unfinished, yet offers a great layout for future rec room, 4th bedroom plus storage! ENJOY the fenced & landscaped yard with deck. Enjoy all that Lakeland has to offer with multiple parks, trails plus steps away from schools, restaurants & shopping, making this the perfect place to call home!

Built in 2005

Essential Information

MLS® #	E4430379
Price	\$539,900
Bedrooms	3
Bathrooms	2.50



Full Baths	2
Half Baths	1
Square Footage	1,729
Acres	0.00
Year Built	2005
Type	Single Family
Sub-Type	Detached Single Family
Style	2 Storey
Status	Active

Community Information

Address	130 Chestermere Crescent
Area	Sherwood Park
Subdivision	Lakeland Ridge
City	Sherwood Park
County	ALBERTA
Province	AB
Postal Code	T8H 2W6

Amenities

Amenities	Air Conditioner, Deck, No Animal Home, See Remarks
Parking	Double Garage Attached

Interior

Interior Features	ensuite bathroom
Appliances	Air Conditioning-Central, Dishwasher-Built-In, Dryer, Garage Opener, Hood Fan, Oven-Microwave, Refrigerator, Stove-Electric, Washer, Window Coverings
Heating	Forced Air-1, Natural Gas
Fireplace	Yes
Fireplaces	Corner
Stories	2
Has Basement	Yes
Basement	Full, Unfinished

Exterior

Exterior	Wood, Vinyl
Exterior Features	Fenced, Landscaped, Playground Nearby, Schools, Shopping Nearby, See Remarks

Roof	Asphalt Shingles
Construction	Wood, Vinyl
Foundation	Concrete Perimeter

School Information

Elementary	LAKELAND RIDGE
Middle	LAKELAND RIDGE
High	SALISBURY COMP

Additional Information

Date Listed	April 11th, 2025
Days on Market	9
Zoning	Zone 25

DATA IS DEEMED RELIABLE BUT IS NOT GUARANTEED ACCURATE BY THE REALTORS® ASSOCIATION OF EDMONTON. COPYRIGHT 2025 BY THE REALTORS® ASSOCIATION OF EDMONTON. ALL RIGHTS RESERVED. Trademarks are owned or controlled by the Canadian Real Estate Association (CREA) and identify real estate professionals who are members of CREA (REALTOR®, REALTORS®) and/or the quality of services they provide (MLS®, Multiple Listing Service®)

Listing information last updated on April 19th, 2025 at 9:47pm MDT