

Courtesy Of Jaclyn Baillie Of Century 21 Masters

## \$696,823 - 46 Rhea Crescent, St. Albert

MLS® #E4429143

**\$696,823**

3 Bedroom, 2.50 Bathroom, 2,253 sqft  
Single Family on 0.00 Acres

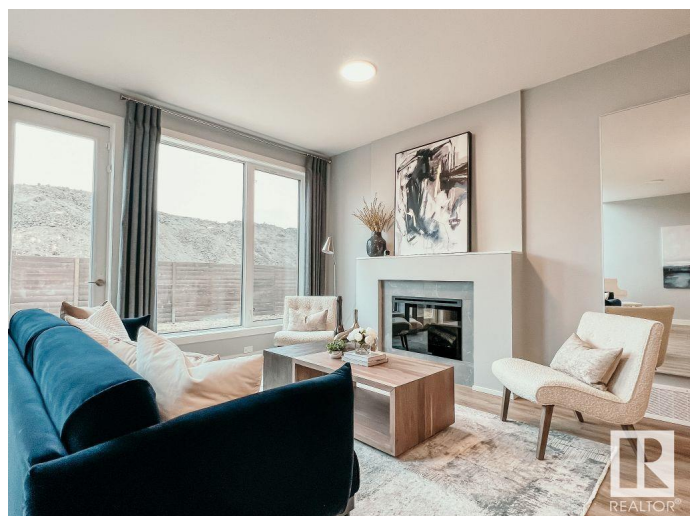
Riverside (St. Albert), St. Albert, AB

Welcome to the brand new Entertain Play 24, a home that features the perfect combination of "wow" and function. Built by award winning Cantiro homes and located in the desirable community of Riverside, this modern elevation is finished in a warm, inviting Birch interior. The centrally located kitchen is designed to ensure it's integrated with a large entertaining space and dining area easily accommodating 8. The open concept living area is highlighted by a raised, electric fireplace, creating a contemporary focal point. Upstairs you will find a lux ensuite with free standing soaker tub and fully tiled shower, 2 additional full sized bedrooms and extended rec room for family movie nights in. The garage is 2ft wider (21'x23') and provides extra space for vehicles and storage. With its thoughtful and prime location steps away from the river trail system, this property is the ideal choice for those seeking modern living in a new vibrant family community.

Built in 2025

### Essential Information

MLS® #	E4429143
Price	\$696,823
Bedrooms	3
Bathrooms	2.50



Full Baths	2
Half Baths	1
Square Footage	2,253
Acres	0.00
Year Built	2025
Type	Single Family
Sub-Type	Detached Single Family
Style	2 Storey
Status	Active

### **Community Information**

Address	46 Rhea Crescent
Area	St. Albert
Subdivision	Riverside (St. Albert)
City	St. Albert
County	ALBERTA
Province	AB
Postal Code	T8N 8A4

### **Amenities**

Amenities	Closet Organizers, Deck, Detectors Smoke, No Animal Home, No Smoking Home, Smart/Program. Thermostat, See Remarks
Parking	Double Garage Attached

### **Interior**

Interior Features	ensuite bathroom
Appliances	Dishwasher-Built-In, Hood Fan, Oven-Microwave, Refrigerator, Stove-Electric
Heating	Forced Air-1, Natural Gas
Stories	2
Has Basement	Yes
Basement	Full, Unfinished

### **Exterior**

Exterior	Wood, Vinyl
Exterior Features	Flat Site, Landscaped, Level Land, Playground Nearby, Schools, Shopping Nearby, See Remarks, Partially Fenced
Roof	Asphalt Shingles
Construction	Wood, Vinyl

Foundation            Concrete Perimeter

### **Additional Information**

Date Listed            April 4th, 2025

Days on Market      10

Zoning                 Zone 24

DATA IS DEEMED RELIABLE BUT IS NOT GUARANTEED ACCURATE BY THE REALTORS® ASSOCIATION OF EDMONTON. COPYRIGHT 2025 BY THE REALTORS® ASSOCIATION OF EDMONTON. ALL RIGHTS RESERVED. Trademarks are owned or controlled by the Canadian Real Estate Association (CREA) and identify real estate professionals who are members of CREA (REALTOR®, REALTORS®) and/or the quality of services they provide (MLS®, Multiple Listing Service®)

Listing information last updated on April 14th, 2025 at 9:32am MDT