

## \$279,000 - 11942 79 Street, Edmonton

MLS® #E4429125

**\$279,000**

4 Bedroom, 2.00 Bathroom, 1,053 sqft

Single Family on 0.00 Acres

Eastwood, Edmonton, AB

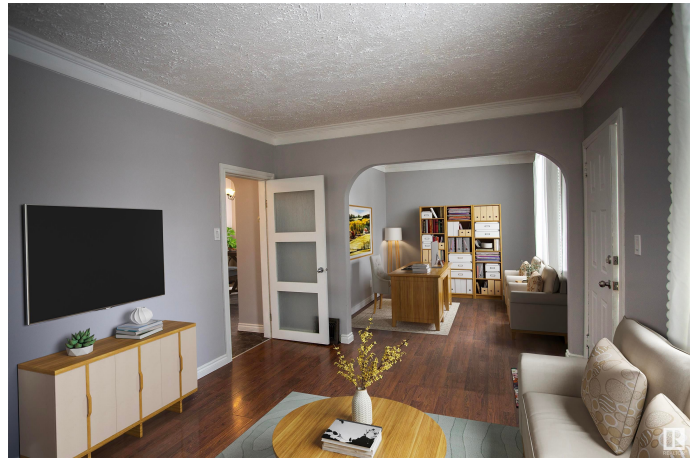
Welcome to this charming 1.5-story character home that has been freshly painted throughout. The spacious living room spans the front of the house, flooded with natural light by large windows. The bright and airy kitchen is well-equipped with ample countertop space and a movable island for easy preparation. The separate dining room features a stunning solid oak staircase leading to the upstairs, complemented by large windows. The upstairs boasts two good-sized bedrooms and a three-piece bathroom. The basement offers two bedrooms, a recently updated bathroom, and a laundry area. The mudroom off the kitchen features ample closed storage and a large storage room that can be used as a pantry or storage space. The double-detached steel construction tandem garage is heated and insulated, making it ideal for a man cave or a shop. The yard is fenced and features a large patio area. This home would make an excellent first home or a great investment property. Some photos are virtually staged & not exactly to scale.

Built in 1907

### Essential Information

MLS® # E4429125

Price \$279,000



Bedrooms	4
Bathrooms	2.00
Full Baths	2
Square Footage	1,053
Acres	0.00
Year Built	1907
Type	Single Family
Sub-Type	Detached Single Family
Style	1 and Half Storey
Status	Active

### Community Information

Address	11942 79 Street
Area	Edmonton
Subdivision	Eastwood
City	Edmonton
County	ALBERTA
Province	AB
Postal Code	T5B 2L2

### Amenities

Amenities	Ceiling 9 ft., Detectors Smoke, Hot Water Natural Gas
Parking Spaces	4
Parking	Double Garage Detached, Tandem

### Interior

Appliances	Dishwasher-Built-In, Dryer, Garage Control, Garage Opener, Refrigerator, Stove-Countertop Electric, Washer, Window Coverings
Heating	Forced Air-1, Natural Gas
Stories	3
Has Basement	Yes
Basement	Full, Finished

### Exterior

Exterior	Wood, Vinyl
Exterior Features	Back Lane, Fenced, Public Transportation, Schools, Shopping Nearby
Roof	Asphalt Shingles
Construction	Wood, Vinyl
Foundation	Concrete Perimeter

**School Information**

Elementary	Delton School
Middle	Spruce Avenue School
High	Eastglen School

**Additional Information**

Date Listed	April 4th, 2025
Days on Market	15
Zoning	Zone 05

DATA IS DEEMED RELIABLE BUT IS NOT GUARANTEED ACCURATE BY THE REALTORS® ASSOCIATION OF EDMONTON. COPYRIGHT 2025 BY THE REALTORS® ASSOCIATION OF EDMONTON. ALL RIGHTS RESERVED.Trademarks are owned or controlled by the Canadian Real Estate Association (CREA) and identify real estate professionals who are members of CREA (REALTOR®, REALTORS®) and/or the quality of services they provide (MLS®, Multiple Listing Service®)

Listing information last updated on April 19th, 2025 at 2:02am MDT