

# \$539,000 - 5414b Twp Road 535, Rural Parkland County

MLS® #E4428558

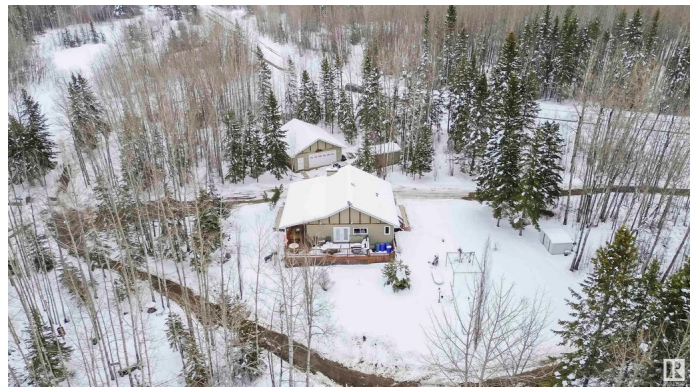
**\$539,000**

2 Bedroom, 2.00 Bathroom, 1,214 sqft

Rural on 2.67 Acres

None, Rural Parkland County, AB

Boating, golf and acreage life... doesn't get better than that! Pleased to present this original owner 2 bed/2 bath fully finished bungalow located on 2.67 acres close to the south shore of Lake Isle. Enjoy your outside coffee/dining and views on the half wrap around deck. Pride of ownership is evident as you enter the large open plan. The kitchen with plenty of cabinet/counter space sides the large dining area perfect for the large family gatherings. The living room is anchored by the cozy stone faced woodstove. The primary bedroom and 4 piece bathroom round out the main floor. Downstairs the in-floor heat welcomes you to the huge family/rec room complete with a 2nd bedroom and 3 piece bath. Plenty of room for all the toys with the double detached/heated garage, many storage sheds and a Quonset. Two ways to enter the property makes it easy to pull through with the big toys! Built-in ceiling speakers in the house, epoxy floor in the garage and meticulous landscaping just add to this gem.



Built in 2010

## Essential Information

MLS® #	E4428558
Price	\$539,000
Bedrooms	2

Bathrooms	2.00
Full Baths	2
Square Footage	1,214
Acres	2.67
Year Built	2010
Type	Rural
Sub-Type	Detached Single Family
Style	Bungalow
Status	Active

### **Community Information**

Address	5414b Twp Road 535
Area	Rural Parkland County
Subdivision	None
City	Rural Parkland County
County	ALBERTA
Province	AB
Postal Code	T0E 0V0

### **Amenities**

Features	Deck
----------	------

### **Interior**

Heating	Forced Air-1, In Floor Heat System, Natural Gas
Fireplace	Yes
Stories	2
Has Basement	Yes
Basement	Full, Finished

### **Exterior**

Exterior	Wood
Exterior Features	Boating, Golf Nearby, Lake View, Private Setting
Construction	Wood
Foundation	Concrete Perimeter

### **Additional Information**

Date Listed	April 1st, 2025
Days on Market	3
Zoning	Zone 70

DATA IS DEEMED RELIABLE BUT IS NOT GUARANTEED ACCURATE BY THE REALTORS® ASSOCIATION OF EDMONTON. COPYRIGHT 2025 BY THE REALTORS® ASSOCIATION OF EDMONTON. ALL RIGHTS RESERVED. Trademarks are owned or controlled by the Canadian Real Estate Association (CREA) and identify real estate professionals who are members of CREA (REALTOR®, REALTORS®) and/or the quality of services they provide (MLS®, Multiple Listing Service®)

Listing information last updated on April 4th, 2025 at 8:17pm MDT