

\$259,900 - 1501 10410 102 Avenue, Edmonton

MLS® #E4428374

\$259,900

1 Bedroom, 1.00 Bathroom, 570 sqft
Condo / Townhouse on 0.00 Acres

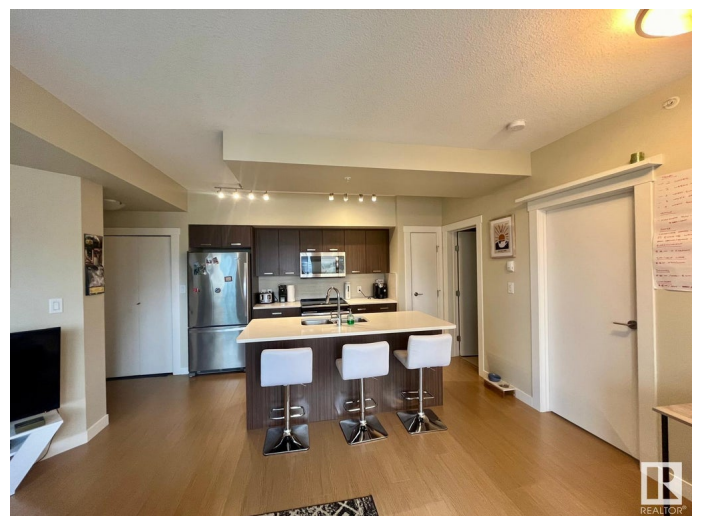
Downtown (Edmonton), Edmonton, AB

Modern & Fully Furnished 1-Bedroom Condo in Downtown Edmonton – Move-In Ready! An excellent investment opportunity or the perfect place to call home! This stylish 1-bedroom, 1-bathroom condo on the 15th floor offers stunning east-facing city views, a functional open-concept layout, and modern finishes with no carpets—ideal for professionals, students, or investors looking for a turnkey rental. The sleek kitchen features stainless steel appliances and quartz countertops, while in-suite laundry and heated underground parking add everyday ease. Heat and water included in condo fees! Located in a well-maintained building with a healthy reserve fund and low condo fees, this is a worry-free investment in the heart of downtown. Just steps from Rogers Place, 104 Street—™s top restaurants, cafés, and shopping, and within walking distance to the River Valley and nearby dog parks, this is urban living at its finest.

Built in 2017

Essential Information

MLS® #	E4428374
Price	\$259,900
Bedrooms	1
Bathrooms	1.00



Full Baths	1
Square Footage	570
Acres	0.00
Year Built	2017
Type	Condo / Townhouse
Sub-Type	Apartment High Rise
Style	Single Level Apartment
Status	Active

Community Information

Address	1501 10410 102 Avenue
Area	Edmonton
Subdivision	Downtown (Edmonton)
City	Edmonton
County	ALBERTA
Province	AB
Postal Code	T5J 0E9

Amenities

Amenities	Detectors Smoke, Hot Water Natural Gas, Intercom, Secured Parking, Security Door, Sprinkler System-Fire, Natural Gas BBQ Hookup
Parking	Heated, Parkade, Underground

Interior

Appliances	Air Conditioner-Window, Dishwasher-Built-In, Furniture Included, Microwave Hood Fan, Refrigerator-Energy Star, Stacked Washer/Dryer, Stove-Electric, Window Coverings
Heating	Baseboard, Natural Gas
# of Stories	33
Stories	1
Has Basement	Yes
Basement	None, No Basement

Exterior

Exterior	Concrete, Brick, Stone, Stucco
Exterior Features	Back Lane, Corner Lot, Golf Nearby, Level Land, Park/Reserve, Paved Lane, Playground Nearby, Public Swimming Pool, Public Transportation, Schools, Shopping Nearby, View Downtown
Roof	EPDM Membrane
Construction	Concrete, Brick, Stone, Stucco

Foundation Concrete Perimeter

Additional Information

Date Listed April 1st, 2025

Days on Market 3

Zoning Zone 12

Condo Fee \$307

DATA IS DEEMED RELIABLE BUT IS NOT GUARANTEED ACCURATE BY THE REALTORS® ASSOCIATION OF EDMONTON. COPYRIGHT 2025 BY THE REALTORS® ASSOCIATION OF EDMONTON. ALL RIGHTS RESERVED. Trademarks are owned or controlled by the Canadian Real Estate Association (CREA) and identify real estate professionals who are members of CREA (REALTOR®, REALTORS®) and/or the quality of services they provide (MLS®, Multiple Listing Service®)

Listing information last updated on April 4th, 2025 at 3:47pm MDT