

## \$259,900 - 16519 100 Street, Edmonton

MLS® #E4427842

**\$259,900**

3 Bedroom, 1.50 Bathroom, 1,150 sqft

Condo / Townhouse on 0.00 Acres

Lorelei, Edmonton, AB

**LOW CONDO FEES in a fantastic location!!**

This spacious townhome in Lorelei is truly  
â€œmove-in readyâ€•, perfect for the first time  
buyer or investor. **BEAUTIFULLY**

**RENOVATED** throughout, featuring 3  
bedrooms 2 baths, all new doors, flooring, trim,  
electrical fixtures & outlets, tiling in bathroom  
and a finished basement â€œ not a detail has  
been missed. The brand new kitchen has  
gorgeous quartz countertops, modern  
cabinetry, **BRAND NEW** high end s/s  
appliances and elegant subway tile  
backsplash. Open to the bright living and  
dining room which has a custom feature wall,  
tons of natural light from a large picture  
window and cozy fireplace. The upper level  
has three generous sized bedrooms and a  
fabulous new family bathroom with high end  
tile, modern fixtures & **JACUZZI TUB**. The  
basement is finished with a massive family  
room providing lots more living space to enjoy.

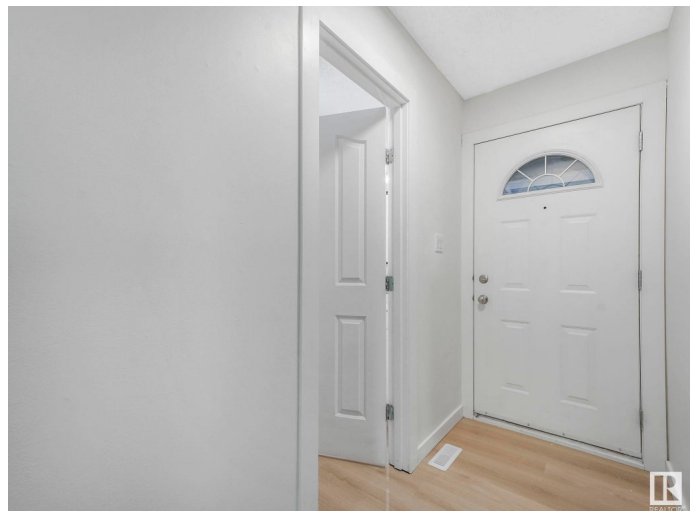
Close to great schools, parks, major shopping  
and biking trails â€œ this family home is  
**PERFECT!** Tons of street parking for visitors.

Built in 1982

### Essential Information

MLS® # E4427842

Price \$259,900



Bedrooms	3
Bathrooms	1.50
Full Baths	1
Half Baths	1
Square Footage	1,150
Acres	0.00
Year Built	1982
Type	Condo / Townhouse
Sub-Type	Townhouse
Style	2 Storey
Status	Active

### Community Information

Address	16519 100 Street
Area	Edmonton
Subdivision	Lorelei
City	Edmonton
County	ALBERTA
Province	AB
Postal Code	T5X 5H4

### Amenities

Amenities	Detectors Smoke, No Animal Home, No Smoking Home, Parking-Visitor, Vinyl Windows
Parking	Stall

### Interior

Appliances	Dishwasher-Built-In, Dryer, Refrigerator, Stove-Electric, Washer
Heating	Forced Air-1, Natural Gas
Fireplace	Yes
Fireplaces	Brick Facing
Stories	3
Has Basement	Yes
Basement	Full, Finished

### Exterior

Exterior	Wood, Stucco, Vinyl
Exterior Features	Fenced, Playground Nearby, Public Transportation, Schools, Shopping Nearby

Roof	Asphalt Shingles
Construction	Wood, Stucco, Vinyl
Foundation	Concrete Perimeter

### **Additional Information**

Date Listed	March 27th, 2025
Days on Market	24
Zoning	Zone 27
Condo Fee	\$260

DATA IS DEEMED RELIABLE BUT IS NOT GUARANTEED ACCURATE BY THE REALTORS® ASSOCIATION OF EDMONTON. COPYRIGHT 2025 BY THE REALTORS® ASSOCIATION OF EDMONTON. ALL RIGHTS RESERVED. Trademarks are owned or controlled by the Canadian Real Estate Association (CREA) and identify real estate professionals who are members of CREA (REALTOR®, REALTORS®) and/or the quality of services they provide (MLS®, Multiple Listing Service®)

Listing information last updated on April 20th, 2025 at 3:17pm MDT