

\$599,000 - 14712 88 Avenue, Edmonton

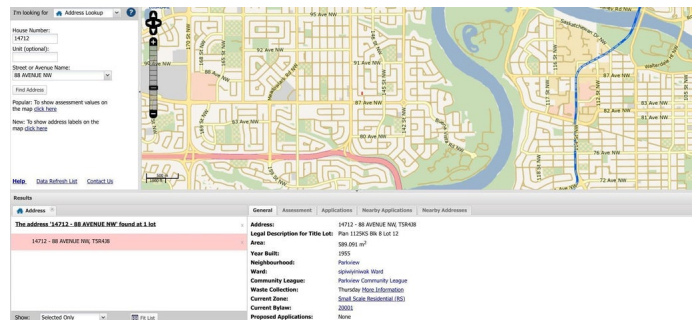
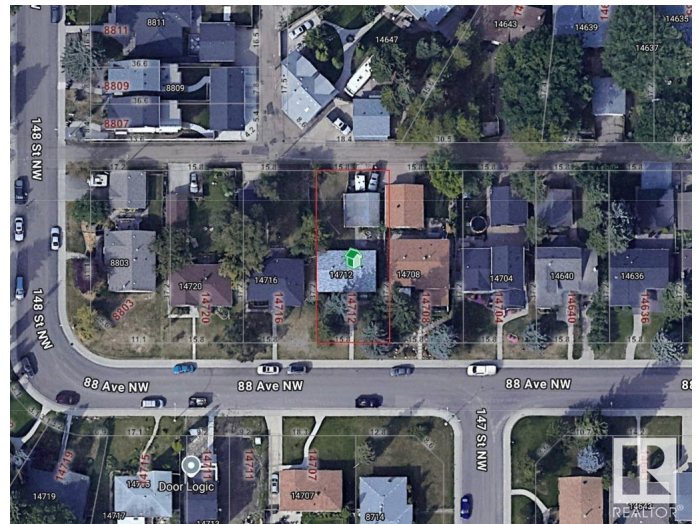
MLS® #E4427312

\$599,000

2 Bedroom, 2.00 Bathroom, 998 sqft
Single Family on 0.00 Acres

Parkview, Edmonton, AB

Prime Parkview Lot â€“ Build Your Dream Home! Located in the highly sought-after community of Parkview, this 50â€™TM x 122â€™TM lot offers an incredible opportunity to build your dream home in one of Edmontonâ€™TMs most desirable neighborhoods. Surrounded by tree-lined streets and stunning custom homes, this property is ideal for those looking to create a modern masterpiece in a mature community. Parkview is known for its top-rated schools, beautiful parks, and quick access to the river valley, making it perfect for families and professionals alike. Enjoy the convenience of being just minutes from Downtown, the University of Alberta, and vibrant shopping and dining options in Crestwood and Glenora. Opportunities like this are rareâ€”donâ€™TMt miss your chance to secure a prime lot in one of Edmontonâ€™TMs best locations! Property sold as-is, where-is.



Built in 1955

Essential Information

MLS® #	E4427312
Price	\$599,000
Bedrooms	2
Bathrooms	2.00
Full Baths	2
Square Footage	998

Acres	0.00
Year Built	1955
Type	Single Family
Sub-Type	Detached Single Family
Style	Bungalow
Status	Active

Community Information

Address	14712 88 Avenue
Area	Edmonton
Subdivision	Parkview
City	Edmonton
County	ALBERTA
Province	AB
Postal Code	T5R 4J8

Amenities

Amenities	See Remarks
Parking	Single Garage Detached

Interior

Appliances	None
Heating	Forced Air-1, Natural Gas
Stories	2
Has Basement	Yes
Basement	None, No Basement

Exterior

Exterior	Wood, Vinyl
Exterior Features	Golf Nearby, Playground Nearby, Public Transportation, Schools, Shopping Nearby
Roof	Asphalt Shingles
Construction	Wood, Vinyl
Foundation	Concrete Perimeter

Additional Information

Date Listed	March 24th, 2025
Days on Market	19
Zoning	Zone 10

DATA IS DEEMED RELIABLE BUT IS NOT GUARANTEED ACCURATE BY THE REALTORS® ASSOCIATION OF EDMONTON. COPYRIGHT 2025 BY THE REALTORS® ASSOCIATION OF EDMONTON. ALL RIGHTS RESERVED. Trademarks are owned or controlled by the Canadian Real Estate Association (CREA) and identify real estate professionals who are members of CREA (REALTOR®, REALTORS®) and/or the quality of services they provide (MLS®, Multiple Listing Service®)

Listing information last updated on April 11th, 2025 at 10:32pm MDT