

\$744,900 - 3131 Winspear Crescent, Edmonton

MLS® #E4426168

\$744,900

5 Bedroom, 4.50 Bathroom, 2,607 sqft
Single Family on 0.00 Acres

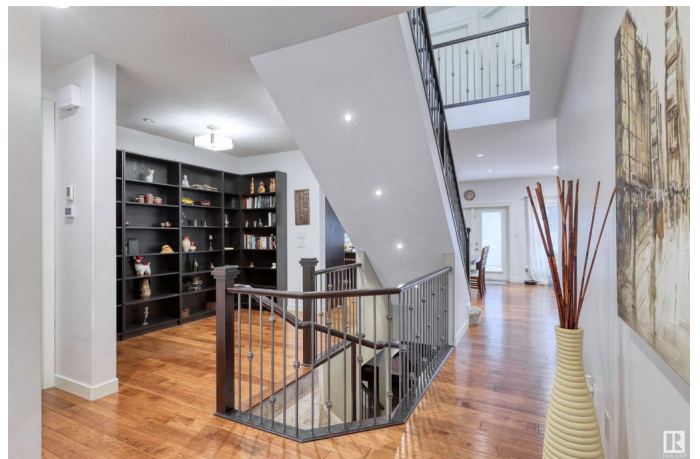
Walker, Edmonton, AB

Luxurious living awaits in this stunning 2 story home in Walker. Boasting 5 beds, 4.5 baths, and ample living space, this home is sure to impress! Enjoy the convenience of a full bath for each bedroom, 2 laundry areas, and a wet bar in the basement. The QUADruple tandem garage features heated floors, perfect for any car enthusiast. The chef's kitchen is a highlight, complete with high-end appliances, oversized island, and walk-in pantry. Additional features include hardwood flooring, high ceilings, railings, and a gas fireplace. The basement floor, ensuite tiled floor are also heated! Step outside to a large deck with a gas line for the BBQ and a fabulous HOT TUB. This sophisticated home offers the ultimate in modern comfort and style.

Built in 2014

Essential Information

MLS® #	E4426168
Price	\$744,900
Bedrooms	5
Bathrooms	4.50
Full Baths	4
Half Baths	1
Square Footage	2,607
Acres	0.00



Year Built	2014
Type	Single Family
Sub-Type	Detached Single Family
Style	2 Storey
Status	Active

Community Information

Address	3131 Winspear Crescent
Area	Edmonton
Subdivision	Walker
City	Edmonton
County	ALBERTA
Province	AB
Postal Code	T6X 1P3

Amenities

Amenities	Air Conditioner, Carbon Monoxide Detectors, Ceiling 9 ft., Closet Organizers, Deck, Detectors Smoke, Exterior Walls- 2"x6", Front Porch, Hot Tub, Hot Wtr Tank-Energy Star, Low Flow Faucets/Shower, No Smoking Home, Smart/Program. Thermostat, Television Connection, Vaulted Ceiling, Vacuum System-Roughed-In, HRV System, Natural Gas BBQ Hookup, 9 ft. Basement Ceiling
-----------	---

Parking Spaces	7
----------------	---

Parking	Heated, Insulated, Over Sized, Quad or More Attached, Tandem
---------	--

Interior

Interior Features	ensuite bathroom
-------------------	------------------

Appliances	Air Conditioning-Central, Dishwasher-Built-In, Dryer, Freezer, Garage Opener, Garburator, Hood Fan, Oven-Built-In, Oven-Microwave, Stacked Washer/Dryer, Stove-Countertop Gas, Washer - Energy Star, Water Softener, Window Coverings, Hot Tub
------------	--

Heating	Forced Air-1, Natural Gas
---------	---------------------------

Fireplace	Yes
-----------	-----

Fireplaces	Direct Vent, Mantel, Stone Facing
------------	-----------------------------------

Stories	3
---------	---

Has Basement	Yes
--------------	-----

Basement	Full, Finished
----------	----------------

Exterior

Exterior	Wood, Stone, Vinyl
----------	--------------------

Exterior Features	Airport Nearby, Corner Lot, Cul-De-Sac, Fenced, Flat Site, Landscaped, Low Maintenance Landscape, No Back Lane, No Through Road, Playground Nearby, Public Transportation, Schools, Shopping Nearby
Lot Description	GeoJet
Roof	Asphalt Shingles
Construction	Wood, Stone, Vinyl
Foundation	Concrete Perimeter

School Information

Elementary	Shauna May Seneca School
Middle	Holy Family
High	J H Picard

Additional Information

Date Listed	March 17th, 2025
Days on Market	24
Zoning	Zone 53
HOA Fees	100
HOA Fees Freq.	Annually

DATA IS DEEMED RELIABLE BUT IS NOT GUARANTEED ACCURATE BY THE REALTORS® ASSOCIATION OF EDMONTON. COPYRIGHT 2025 BY THE REALTORS® ASSOCIATION OF EDMONTON. ALL RIGHTS RESERVED. Trademarks are owned or controlled by the Canadian Real Estate Association (CREA) and identify real estate professionals who are members of CREA (REALTOR®, REALTORS®) and/or the quality of services they provide (MLS®, Multiple Listing Service®)

Listing information last updated on April 10th, 2025 at 3:32am MDT