

\$1,369,000 - 28179 Twp Road 485, Rural Leduc County

MLS® #E4425487

\$1,369,000

5 Bedroom, 3.00 Bathroom, 2,010 sqft

Rural on 79.00 Acres

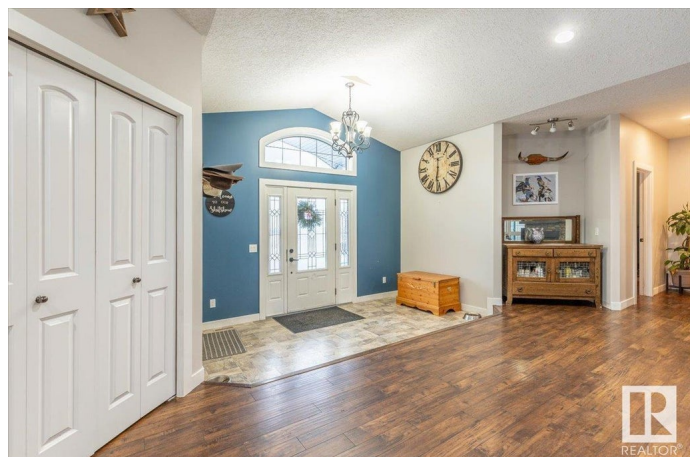
None, Rural Leduc County, AB

This stunning property holds a 2009.96 sq/ft home, 54'x72' Shop, Barn, and more, all situated on 79 Acres! Inside the beautiful home to the main floor you'll find an open living room, dining room, and kitchen with a corner pantry. Three bedrooms are also on the main floor including the primary bedroom that has its own 4 piece ensuite, walk-in closet, and access to the back deck that has a hot tub and gazebo. Another 4 piece bathroom, and mudroom/laundry room with access to the oversized double attached heated garage. The basement has a HUGE family room with custom woodwork, two more bedrooms, and a 3 piece bathroom. The beautiful fully finished shop has 2 overhead doors, an office, 3 piece bathroom with laundry, radiant tub heaters along both sides, and 220 power. The Barn is also finished with a metal roof, has electric heat, and a lean shelter off the side. A Stock Waterer, a variety of fencing, extra farmable land, and 6 campsites make up the remainder of the land with 3 sites having power hookups.

Built in 2009

Essential Information

| | |
|----------|-------------|
| MLS® # | E4425487 |
| Price | \$1,369,000 |
| Bedrooms | 5 |



| | |
|----------------|------------------------|
| Bathrooms | 3.00 |
| Full Baths | 3 |
| Square Footage | 2,010 |
| Acres | 79.00 |
| Year Built | 2009 |
| Type | Rural |
| Sub-Type | Detached Single Family |
| Style | Raised Bungalow |
| Status | Active |

Community Information

| | |
|-------------|--------------------|
| Address | 28179 Twp Road 485 |
| Area | Rural Leduc County |
| Subdivision | None |
| City | Rural Leduc County |
| County | ALBERTA |
| Province | AB |
| Postal Code | T0C 2P0 |

Amenities

| | |
|----------|---|
| Features | Deck, Gazebo, Hot Tub, Parking-Extra, Workshop, See Remarks |
|----------|---|

Interior

| | |
|-------------------|---------------------------|
| Interior Features | ensuite bathroom |
| Heating | Forced Air-1, Natural Gas |
| Fireplace | Yes |
| Stories | 2 |
| Has Basement | Yes |
| Basement | Full, Finished |

Exterior

| | |
|-------------------|--|
| Exterior | Wood |
| Exterior Features | Cross Fenced, Landscaped, Level Land, Private Setting, Schools, Treed Lot, See Remarks |
| Construction | Wood |
| Foundation | Concrete Perimeter |

Additional Information

| | |
|-------------|------------------|
| Date Listed | March 13th, 2025 |
|-------------|------------------|

Days on Market 38

Zoning Zone 90

DATA IS DEEMED RELIABLE BUT IS NOT GUARANTEED ACCURATE BY THE REALTORS® ASSOCIATION OF EDMONTON. COPYRIGHT 2025 BY THE REALTORS® ASSOCIATION OF EDMONTON. ALL RIGHTS RESERVED. Trademarks are owned or controlled by the Canadian Real Estate Association (CREA) and identify real estate professionals who are members of CREA (REALTOR®, REALTORS®) and/or the quality of services they provide (MLS®, Multiple Listing Service®)

Listing information last updated on April 20th, 2025 at 9:02am MDT