

\$769,900 - 8429 Mayday Link, Edmonton

MLS® #E4424780

\$769,900

5 Bedroom, 4.00 Bathroom, 2,677 sqft
Single Family on 0.00 Acres

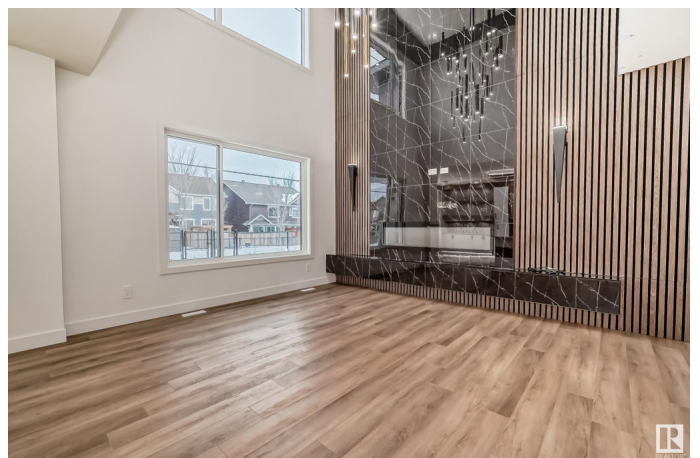
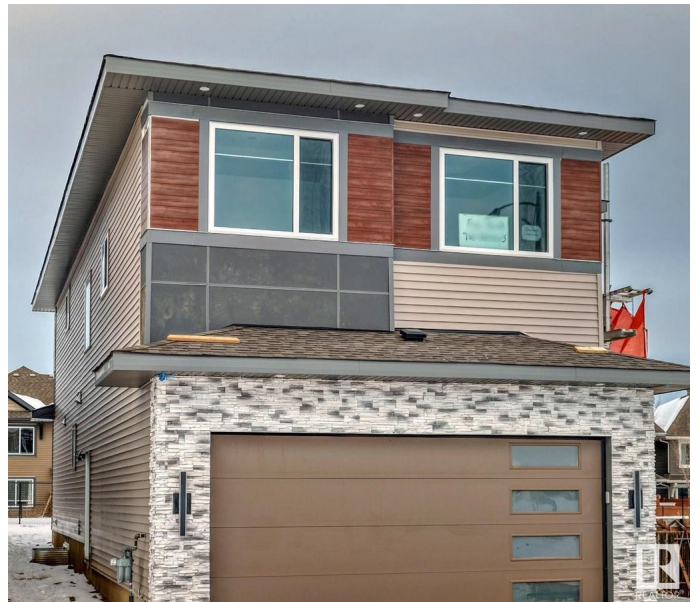
The Orchards At Ellerslie, Edmonton, AB

Welcome to this beautiful house built with love and care. Total of 5 bedrooms and 4 bathrooms. You will be impressed by the finishing standard of this property. Luxury vinyl plank throughout the main floor and upper floor is finished with premium carpet. Total of 9 ft ceiling on all three floors and 8 ft door height. Two of the bedrooms upstairs have their own en-suite. Offers full bed and bath on the main floor for your added convenience. The house is built on a regular lot, offers 4 windows in the basement with a side door, offering you the potential of the future legal suite. Backs to walking trail. Walking distance to bus. Must see property.

Built in 2024

Essential Information

MLS® #	E4424780
Price	\$769,900
Bedrooms	5
Bathrooms	4.00
Full Baths	4
Square Footage	2,677
Acres	0.00
Year Built	2024
Type	Single Family
Sub-Type	Detached Single Family



Style 2 Storey
Status Active

Community Information

Address 8429 Mayday Link
Area Edmonton
Subdivision The Orchards At Ellerslie
City Edmonton
County ALBERTA
Province AB
Postal Code T6X 3G1

Amenities

Amenities Carbon Monoxide Detectors, Ceiling 9 ft., Deck, Detectors Smoke, Hot Water Natural Gas, No Animal Home, No Smoking Home, Television Connection, Vacuum System-Roughed-In, HRV System, 9 ft. Basement Ceiling
Parking Double Garage Attached

Interior

Interior Features ensuite bathroom
Appliances Hood Fan
Heating Forced Air-1, Natural Gas
Fireplace Yes
Fireplaces Mantel
Stories 2
Has Basement Yes
Basement Full, Unfinished

Exterior

Exterior Concrete, Vinyl
Exterior Features Airport Nearby, Flat Site, Golf Nearby, Playground Nearby, Shopping Nearby, Partially Fenced
Roof Asphalt Shingles
Construction Concrete, Vinyl
Foundation Concrete Perimeter

Additional Information

Date Listed March 8th, 2025
Days on Market 35

Zoning

Zone 53

DATA IS DEEMED RELIABLE BUT IS NOT GUARANTEED ACCURATE BY THE REALTORS® ASSOCIATION OF EDMONTON. COPYRIGHT 2025 BY THE REALTORS® ASSOCIATION OF EDMONTON. ALL RIGHTS RESERVED. Trademarks are owned or controlled by the Canadian Real Estate Association (CREA) and identify real estate professionals who are members of CREA (REALTOR®, REALTORS®) and/or the quality of services they provide (MLS®, Multiple Listing Service®)

Listing information last updated on April 12th, 2025 at 1:47am MDT