

\$299,900 - 8 324 Heatherglen Drive, Spruce Grove

MLS® #E4423461

\$299,900

3 Bedroom, 3.50 Bathroom, 1,194 sqft

Condo / Townhouse on 0.00 Acres

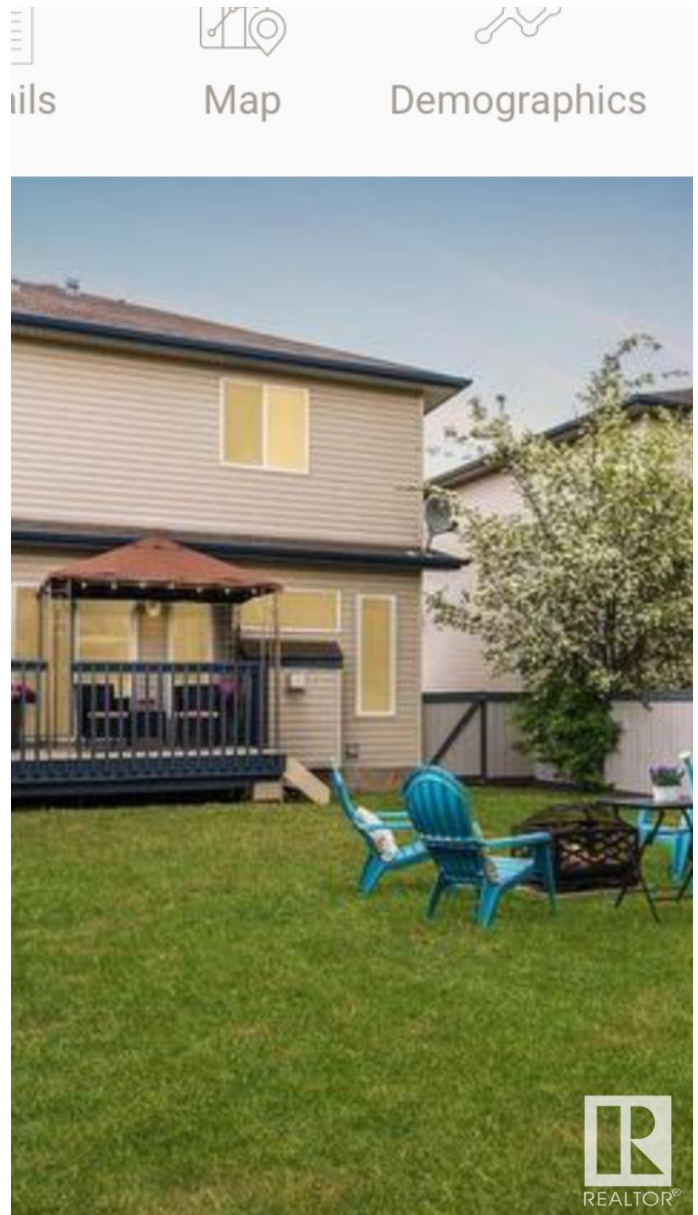
Heatherglen, Spruce Grove, AB

Nestled in the heart of Spruce Grove is The Parks of Heatherglen. The open concept main floor has tons of natural light. Huge kitchen with a breakfast bar & tons of counter space. Gather & eat in your lovely dining space just off your sliding door leading outside to your south facing private backyard. Upstairs you will find your primary bdrm with 2 walk-in closets & a full 4 pc ensuite. The 2nd bdrm is a perfect place for a growing family, guest suite or home office. The basement completes this home with an enormous rec room & full bath. These charming half duplexes have easy access to the Yellowhead making your commute to work a breeze. Surrounded by many amenities make this an ideal first home or investment property. This home has everything you need & more.

Built in 2002

Essential Information

MLS® #	E4423461
Price	\$299,900
Bedrooms	3
Bathrooms	3.50
Full Baths	3
Half Baths	1
Square Footage	1,194
Acres	0.00



Year Built 2002
 Type Condo / Townhouse
 Sub-Type Half Duplex
 Style 2 Storey
 Status Active

Community Information

Address 8 324 Heatherglen Drive
 Area Spruce Grove
 Subdivision Heatherglen
 City Spruce Grove
 County ALBERTA
 Province AB
 Postal Code T7X 4J4

Amenities

Amenities Front Porch, No Smoking Ho
 Parking Single Garage Attached

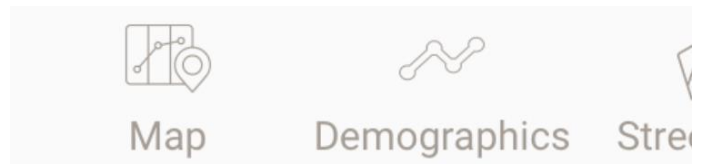
Interior

Interior Features ensuite bathroom
 Appliances Dishwasher-Built-In, Dryer, C
 Refrigerator, Stove-Electric, V
 Heating Forced Air-1, Natural Gas
 Fireplace Yes
 Fireplaces Direct Vent, Insert
 Stories 3
 Has Basement Yes
 Basement Full, Finished

Exterior

Exterior Wood, Vinyl
 Exterior Features Fenced, Golf Nearby, Landscaped, Playground Nearby, Public Transportation
 Roof Asphalt Shingles
 Construction Wood, Vinyl
 Foundation Concrete Perimeter

Additional Information



Date Listed February 28th, 2025
Days on Market 36
Zoning Zone 91
Condo Fee \$195



DATA IS DEEMED RELIABLE BUT IS NOT GUARANTEED ACCURATE BY THE REALTORS® ASSOCIATION OF EDMONTON. COPYRIGHT 2025 BY THE REALTORS® ASSOCIATION OF EDMONTON. ALL RIGHTS RESERVED. Trademarks are owned or controlled by the Canadian Real Estate Association (CREA) and identify real estate professionals who are members of CREA (REALTOR®, REALTORS®) and/or the quality of services they provide (MLS®, Multiple Listing Service®)

Listing information last updated on April 5th, 2025 at 8:17am MDT