

\$749,000 - 106 Eldridge Point(e), St. Albert

MLS® #E4423262

\$749,000

7 Bedroom, 5.00 Bathroom, 2,510 sqft
Single Family on 0.00 Acres

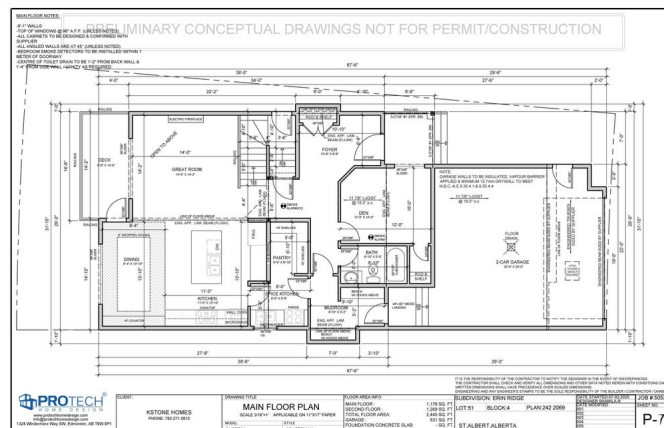
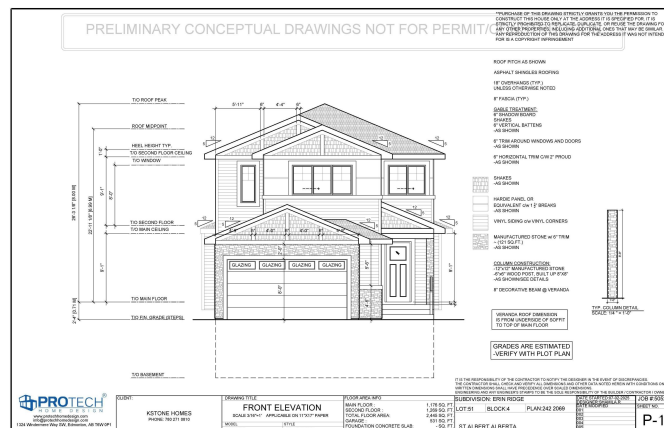
Erin Ridge North, St. Albert, AB

This stunning pre-construction custom 2-story single-family home is nestled in the heart of Erin Ridge, St. Albert, AB. Ideally located near schools, parks, grocery stores (including Costco), transit, and numerous amenities, this home offers exceptional value. It features 9 ft ceilings throughout, including the basement, enhancing the spacious and airy feel. The main house boasts a bedroom on the main floor, a spice kitchen, a huge pantry, and a full bath. Upstairs, youâ€™ll find 3 spacious bedrooms, including 2 master suites, 3 full baths, a versatile bonus room, and multiple large walk-in closetsâ€”perfect for ample storage. Photos are from a similar home built by the builder; actual finishes may vary. Additionally, homes backing onto a pond and larger lots are available.

Built in 2025

Essential Information

MLS® #	E4423262
Price	\$749,000
Bedrooms	7
Bathrooms	5.00
Full Baths	5
Square Footage	2,510
Acres	0.00
Year Built	2025



Type	Single Family
Sub-Type	Detached Single Family
Style	2 Storey
Status	Active

Community Information

Address	106 Eldridge Point(e)
Area	St. Albert
Subdivision	Erin Ridge North
City	St. Albert
County	ALBERTA
Province	AB
Postal Code	T8N 5X4

Amenities

Amenities	On Street Parking, Carbon Monoxide Detectors, Ceiling 9 ft., Closet Organizers, Deck, Detectors Smoke, No Animal Home, No Smoking Home, Television Connection, See Remarks, HRV System, 9 ft. Basement Ceiling
Parking	Double Garage Attached

Interior

Interior Features	ensuite bathroom
Appliances	Appliances Negotiable, Garage Control, Garage Opener, Hood Fan, See Remarks, Builder Appliance Credit
Heating	Forced Air-1, Natural Gas
Fireplace	Yes
Fireplaces	Mantel
Stories	3
Has Basement	Yes
Basement	Full, Unfinished

Exterior

Exterior	Wood, Stone, Vinyl, Hardie Board Siding
Exterior Features	Golf Nearby, No Back Lane, Playground Nearby, Public Swimming Pool, Public Transportation, Schools, Shopping Nearby, Stream/Pond, See Remarks
Roof	Asphalt Shingles
Construction	Wood, Stone, Vinyl, Hardie Board Siding
Foundation	Concrete Perimeter

Additional Information

Date Listed February 27th, 2025

Days on Market 38

Zoning Zone 24

DATA IS DEEMED RELIABLE BUT IS NOT GUARANTEED ACCURATE BY THE REALTORS® ASSOCIATION OF EDMONTON. COPYRIGHT 2025 BY THE REALTORS® ASSOCIATION OF EDMONTON. ALL RIGHTS RESERVED. Trademarks are owned or controlled by the Canadian Real Estate Association (CREA) and identify real estate professionals who are members of CREA (REALTOR®, REALTORS®) and/or the quality of services they provide (MLS®, Multiple Listing Service®)

Listing information last updated on April 6th, 2025 at 4:32am MDT