

Courtesy Of Keith B Madsen Of MaxWell Progressive

# \$17,900 - 5611 Railway Avenue, Boyle

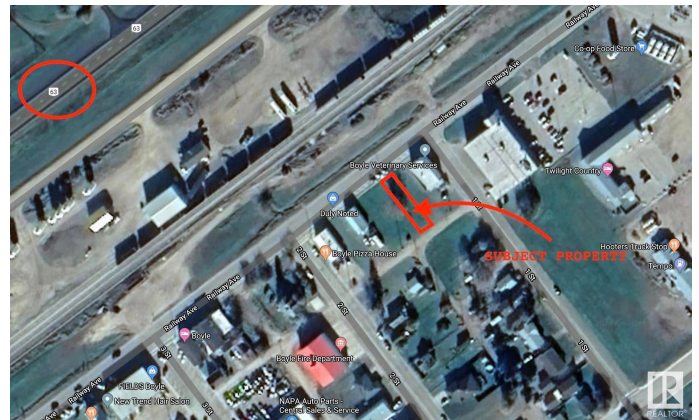
MLS® #E4422692

**\$17,900**

0 Bedroom, 0.00 Bathroom,  
Land Commercial on 0.00 Acres

Boyle, Boyle, AB

LOWEST PRICE FOR A COMMERCIAL LOT IN BOYLE! Don't miss out on this opportunity to build your dream business with exposure to HWY 63 and Railway ave in Boyle. Half way between Edmonton and Fort McMurray you could tap into the massive amount of traffic that runs on the highway daily! Exposure is key and some well established businesses are near by including the Co-op grocery store, the Boyle Vet, and the Pizza House! Municipal services are available to this lot.



## Essential Information

|           |                 |
|-----------|-----------------|
| MLS® #    | E4422692        |
| Price     | \$17,900        |
| Bathrooms | 0.00            |
| Acres     | 0.00            |
| Type      | Land Commercial |
| Status    | Active          |

## Community Information

|             |                     |
|-------------|---------------------|
| Address     | 5611 Railway Avenue |
| Area        | Boyle               |
| Subdivision | Boyle               |
| City        | Boyle               |
| County      | ALBERTA             |
| Province    | AB                  |
| Postal Code | T0A 0M0             |

## Additional Information

Date Listed February 22nd, 2025

Days on Market 41

Zoning Zone 60

DATA IS DEEMED RELIABLE BUT IS NOT GUARANTEED ACCURATE BY THE REALTORS® ASSOCIATION OF EDMONTON. COPYRIGHT 2025 BY THE REALTORS® ASSOCIATION OF EDMONTON. ALL RIGHTS RESERVED. Trademarks are owned or controlled by the Canadian Real Estate Association (CREA) and identify real estate professionals who are members of CREA (REALTOR®, REALTORS®) and/or the quality of services they provide (MLS®, Multiple Listing Service®)

Listing information last updated on April 4th, 2025 at 2:47am MDT