

## \$570,990 - 1095 Stoneside Road, Sherwood Park

MLS® #E4421513

**\$570,990**

3 Bedroom, 2.50 Bathroom, 1,761 sqft  
Single Family on 0.00 Acres

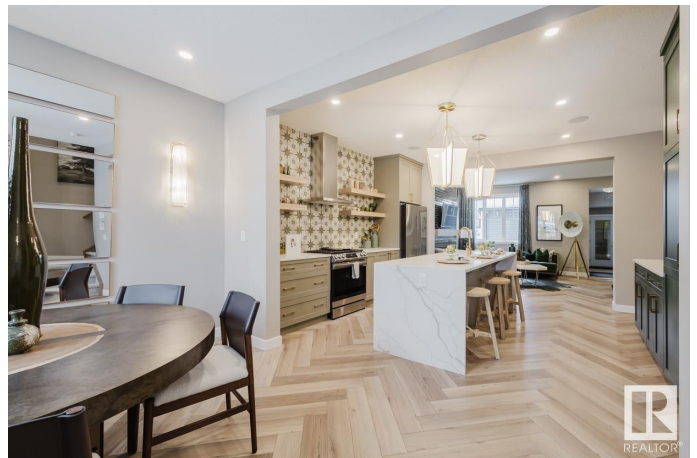
Hearthstone (Strathcona), Sherwood Park, AB

**SHOWHOME!** Brand New Home by Mattamy Homes in the master planned community of Hearthstone. This stunning PALLISER duplex showhome offers 3 bedrooms and 2 1/2 bathrooms. The open concept and inviting main floor features 9' ceilings, a gourmet kitchen with included appliances, quartz countertops, pantry, gas line to stove & waterline to fridge. Walk outside onto your private courtyard, or cozy up in the great room to the electric fireplace. Upstairs, you'll continue to be impressed with a convenient walk-in laundry room, full bath, and 3 bedrooms. The master is a true oasis, complete with a walk-in closet and ensuite with double sinks and separate tub/shower! Enjoy the added benefits with its double ATTACHED garage, fernsby smart home system, washer/dryer, alarm system, basement bathroom rough ins and full landscaping. Enjoy access to amenities including a playground and close access to schools, shopping, commercial, and recreational facilities. **QUICK POSSESSION!**

Built in 2022

### Essential Information

MLS® #	E4421513
Price	\$570,990



Bedrooms	3
Bathrooms	2.50
Full Baths	2
Half Baths	1
Square Footage	1,761
Acres	0.00
Year Built	2022
Type	Single Family
Sub-Type	Half Duplex
Style	2 Storey
Status	Active

### **Community Information**

Address	1095 Stoneside Road
Area	Sherwood Park
Subdivision	Hearthstone (Strathcona)
City	Sherwood Park
County	ALBERTA
Province	AB
Postal Code	T8H 3A1

### **Amenities**

Amenities	Carbon Monoxide Detectors, Ceiling 9 ft., Detectors Smoke, Front Porch, Vinyl Windows, See Remarks, Natural Gas Stove Hookup
Parking	Double Garage Attached

### **Interior**

Interior Features	ensuite bathroom
Appliances	Alarm/Security System, Dishwasher-Built-In, Dryer, Garage Control, Garage Opener, Hood Fan, Oven-Microwave, Refrigerator, Stove-Gas, Washer
Heating	Forced Air-1, Natural Gas
Fireplace	Yes
Fireplaces	Mantel
Stories	2
Has Basement	Yes
Basement	Full, Unfinished

### **Exterior**

Exterior	Wood, Vinyl
Exterior Features	Landscaped, Playground Nearby, Schools, See Remarks
Roof	Asphalt Shingles
Construction	Wood, Vinyl
Foundation	Concrete Perimeter

### **School Information**

Elementary	Davidson Creek Elementary
Middle	F.R. Haythorne Junior High
High	Bev Facey Community High

### **Additional Information**

Date Listed	February 12th, 2025
Days on Market	30
Zoning	Zone 25

DATA IS DEEMED RELIABLE BUT IS NOT GUARANTEED ACCURATE BY THE REALTORS® ASSOCIATION OF EDMONTON. COPYRIGHT 2025 BY THE REALTORS® ASSOCIATION OF EDMONTON. ALL RIGHTS RESERVED. Trademarks are owned or controlled by the Canadian Real Estate Association (CREA) and identify real estate professionals who are members of CREA (REALTOR®, REALTORS®) and/or the quality of services they provide (MLS®, Multiple Listing Service®)

Listing information last updated on March 14th, 2025 at 10:47am MDT