

Courtesy Of Noah Issa and Ali Shaben Of Sable Realty

# \$0 - 200 664 Wye Road, Sherwood Park

MLS® #E4421230

**\$0**

0 Bedroom, 0.00 Bathroom,  
Retail on 0.00 Acres

Nottingham, Sherwood Park, AB

Prime Retail Space for Lease in Nottingham Centre – A 1,240 SF retail unit, formerly a hair salon, is now available for lease in Nottingham Centre, a high-exposure commercial property on Wye Road in Sherwood Park. This turnkey space is ideal for a variety of retail, personal service, or medical uses. Strategically located in a thriving retail hub, the property benefits from strong demographics, including a 71,307 population and an average household income of \$169K within 5KM. Immediate possession available.

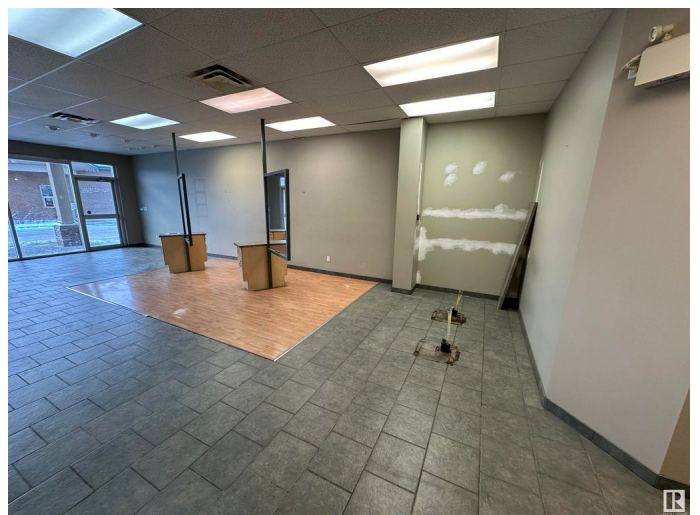
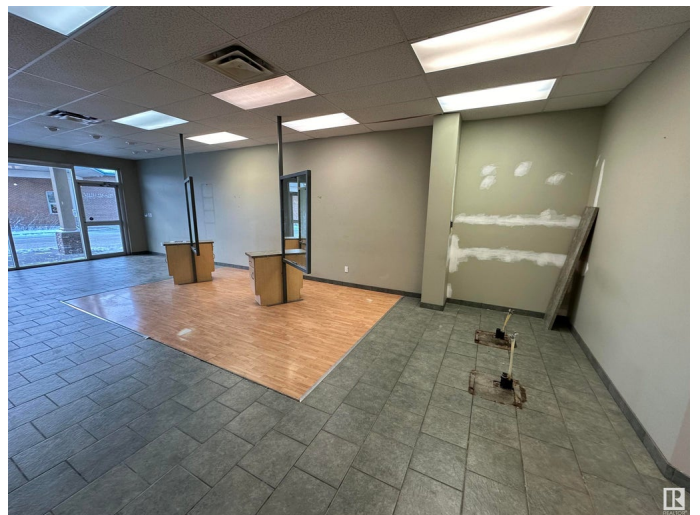
Built in 2000

## Essential Information

MLS® #	E4421230
Bathrooms	0.00
Acres	0.00
Year Built	2000
Type	Retail
Status	Active

## Community Information

Address	200 664 Wye Road
Area	Sherwood Park
Subdivision	Nottingham
City	Sherwood Park
County	ALBERTA



Province AB  
Postal Code T8A 6G3

### **Exterior**

Exterior Block  
Construction Block

### **Additional Information**

Date Listed February 12th, 2025  
Days on Market 52  
Zoning Zone 25

DATA IS DEEMED RELIABLE BUT IS NOT GUARANTEED ACCURATE BY THE REALTORS® ASSOCIATION OF EDMONTON. COPYRIGHT 2025 BY THE REALTORS® ASSOCIATION OF EDMONTON. ALL RIGHTS RESERVED. Trademarks are owned or controlled by the Canadian Real Estate Association (CREA) and identify real estate professionals who are members of CREA (REALTOR®, REALTORS®) and/or the quality of services they provide (MLS®, Multiple Listing Service®)

Listing information last updated on April 5th, 2025 at 12:47pm MDT