

Courtesy Of Fan Yang and Vida Guan Of Mozaic Realty Group

\$229,000 - 213 1316 Windermere Way, Edmonton

MLS® #E4420658

\$229,000

1 Bedroom, 1.00 Bathroom, 520 sqft
Condo / Townhouse on 0.00 Acres

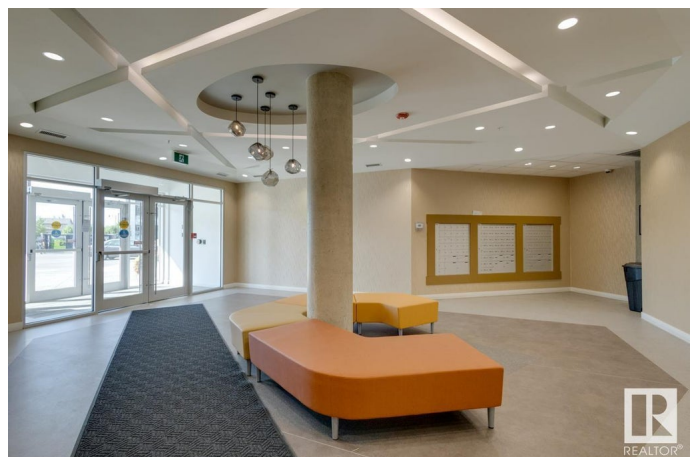
Windermere, Edmonton, AB

Welcome to LUX, a brand new STEEL & CONCRETE luxury building in Upper Windermere offers all amenities. 18+building. Condo allows pet and Airbnb. Stunning POND & PARK view - Proving a serene and peaceful environment to relax and unwind. Titled U/G Parking. In suite Laundry. Decorated with only the best of everything. Highlights: 10'™ ceilings; energy efficient windows; Upgraded plank floor & carpet through out the unit; Kitchen-Complete ss gourmet appliances; maple cabinets up to ceilings; Contemporary, quartz countertops; Glass tile backsplash; lots of storage space. Full width vanity mirrors. One Secured underground parking (Heated and ventilated). It retains the value of peaceful living with great access to all amenities and transportation, community gardens, a K-9 school and while being conveniently close to all amenities.

Built in 2019

Essential Information

MLS® #	E4420658
Price	\$229,000
Bedrooms	1
Bathrooms	1.00
Full Baths	1
Square Footage	520



Acres	0.00
Year Built	2019
Type	Condo / Townhouse
Sub-Type	Lowrise Apartment
Style	Single Level Apartment
Status	Active

Community Information

Address	213 1316 Windermere Way
Area	Edmonton
Subdivision	Windermere
City	Edmonton
County	ALBERTA
Province	AB
Postal Code	T6W 2J3

Amenities

Amenities	Air Conditioner, Ceiling 9 ft., Secured Parking, Security Door
Parking Spaces	1
Parking	Underground

Interior

Appliances	Air Conditioning-Central, Dishwasher-Built-In, Dryer, Garage Control, Microwave Hood Fan, Refrigerator, Stove-Electric, Washer
Heating	Heat Pump, Natural Gas
# of Stories	5
Stories	1
Has Basement	Yes
Basement	None, No Basement

Exterior

Exterior	Concrete, Metal, Stone, Stucco
Exterior Features	Airport Nearby, Golf Nearby, Picnic Area, Playground Nearby, Public Transportation, Schools, Shopping Nearby
Roof	Asphalt Shingles
Construction	Concrete, Metal, Stone, Stucco
Foundation	Concrete Perimeter

School Information

Elementary	CONSTABLE DANIEL WOODALL
Middle	RIVERBEND SCHOOL
High	LILLIAN OSBORNE SCHOOL

Additional Information

Date Listed	February 6th, 2025
Days on Market	60
Zoning	Zone 56
Condo Fee	\$275

DATA IS DEEMED RELIABLE BUT IS NOT GUARANTEED ACCURATE BY THE REALTORS® ASSOCIATION OF EDMONTON. COPYRIGHT 2025 BY THE REALTORS® ASSOCIATION OF EDMONTON. ALL RIGHTS RESERVED. Trademarks are owned or controlled by the Canadian Real Estate Association (CREA) and identify real estate professionals who are members of CREA (REALTOR®, REALTORS®) and/or the quality of services they provide (MLS®, Multiple Listing Service®)

Listing information last updated on April 7th, 2025 at 3:02am MDT