

# \$135,000 - Na, Wetaskiwin

MLS® #E4420258

**\$135,000**

0 Bedroom, 0.00 Bathroom,  
Business on 0.00 Acres

Highway Central, Wetaskiwin, AB

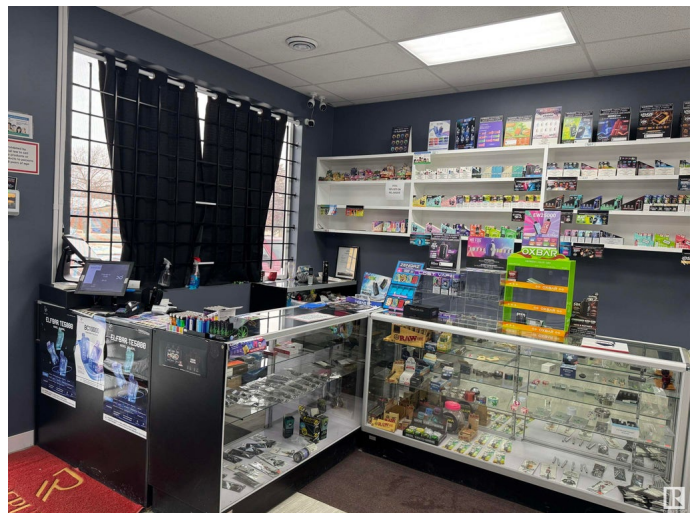
Business for Sale: Fantastic opportunity for Turnkey Business Vape Shop. Located in a high-traffic area with great visibility. Strong presence in the area, surrounded by Subway, Edo, Domino's Pizza, with Strong Foot traffic this business has huge potential to grow. With reasonable rent (\$3200) the business allows for a huge margin and financial stability. Please do not approach the staff as they are not authorized to discuss the details. Act now to secure your future and own a thriving business.

## Essential Information

MLS® #	E4420258
Price	\$135,000
Bathrooms	0.00
Acres	0.00
Type	Business
Status	Active

## Community Information

Address	Na
Area	Wetaskiwin
Subdivision	Highway Central
City	Wetaskiwin
County	ALBERTA
Province	AB



Postal Code T9A 1V8

### **Additional Information**

Date Listed February 3rd, 2025

Days on Market 66

Zoning Zone 80

DATA IS DEEMED RELIABLE BUT IS NOT GUARANTEED ACCURATE BY THE REALTORS® ASSOCIATION OF EDMONTON. COPYRIGHT 2025 BY THE REALTORS® ASSOCIATION OF EDMONTON. ALL RIGHTS RESERVED. Trademarks are owned or controlled by the Canadian Real Estate Association (CREA) and identify real estate professionals who are members of CREA (REALTOR®, REALTORS®) and/or the quality of services they provide (MLS®, Multiple Listing Service®)

Listing information last updated on April 9th, 2025 at 10:47pm MDT