

\$0 - 5015 50 Avenue, Cold Lake

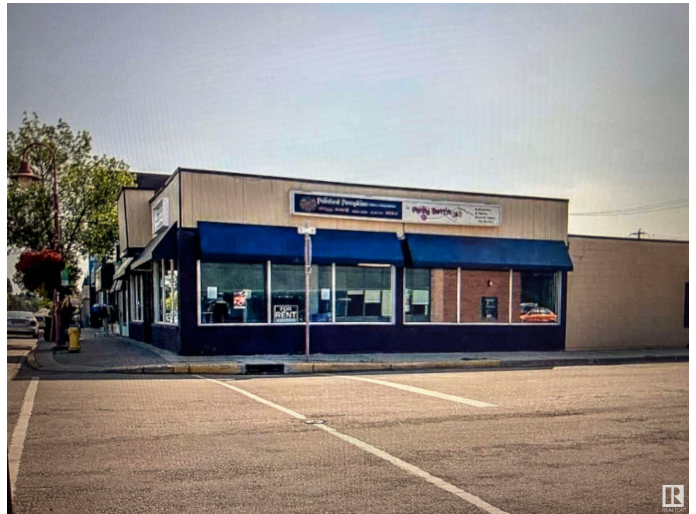
MLS® #E4419950

\$0

0 Bedroom, 0.00 Bathroom,
Retail on 0.00 Acres

Cold Lake South, Cold Lake, AB

Great Downtown Location for your business!
All the exposure you need with this corner
space in a well maintained commercial
building with plenty of parking . Lots of traffic
from both sides and across the street from
banks, restaurants , pharmacies and many
other businesses. \$15 per sq ft INCLUDES
TAXES & BUILDING INSURANCE. UTILITIES
ARE EXTRA.



Built in 1958

Essential Information

| | |
|------------|----------|
| MLS® # | E4419950 |
| Bathrooms | 0.00 |
| Acres | 0.00 |
| Year Built | 1958 |
| Type | Retail |
| Status | Active |

Community Information

| | |
|-------------|-----------------|
| Address | 5015 50 Avenue |
| Area | Cold Lake |
| Subdivision | Cold Lake South |
| City | Cold Lake |
| County | ALBERTA |
| Province | AB |
| Postal Code | T9M 1X6 |

Exterior

| | |
|--------------|-------|
| Exterior | Block |
| Construction | Block |

Additional Information

| | |
|----------------|--------------------|
| Date Listed | January 31st, 2025 |
| Days on Market | 64 |
| Zoning | Zone 60 |

DATA IS DEEMED RELIABLE BUT IS NOT GUARANTEED ACCURATE BY THE REALTORS® ASSOCIATION OF EDMONTON. COPYRIGHT 2025 BY THE REALTORS® ASSOCIATION OF EDMONTON. ALL RIGHTS RESERVED. Trademarks are owned or controlled by the Canadian Real Estate Association (CREA) and identify real estate professionals who are members of CREA (REALTOR®, REALTORS®) and/or the quality of services they provide (MLS®, Multiple Listing Service®)

Listing information last updated on April 5th, 2025 at 12:47pm MDT