

Courtesy Of Erin Holowach Of ComFree

# **\$850,000 - 19 54129 Rge Road 275, Rural Parkland County**

MLS® #E4413574

## **\$850,000**

3 Bedroom, 3.00 Bathroom, 3,845 sqft  
Rural on 3.16 Acres

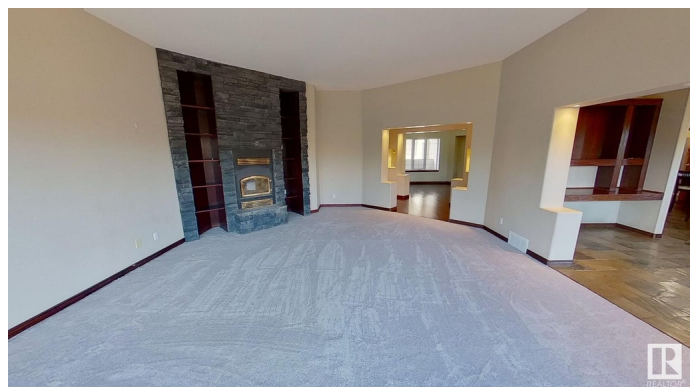
Surrey Lane, Rural Parkland County, AB

This beautiful executive home is in a desirable community in Surrey Lane. This bungalow is just under 4000 square feet and is located on top of the hill. This home offers 2 master bedrooms with private ensuites and each with their own fireplace and private decks plus one extra bedroom and a large office. In the heart of the home you will find your gourmet kitchen with granite counters and a huge island and tons of cabinets. All the space and tools you will ever need to cook and entertain, and kitchen opens to a spacious breakfast nook and a great room with floor to ceiling fireplace. Triple attached garage with RV tall door.

Built in 2001

### **Essential Information**

MLS® #	E4413574
Price	\$850,000
Bedrooms	3
Bathrooms	3.00
Full Baths	3
Square Footage	3,845
Acres	3.16
Year Built	2001
Type	Rural
Sub-Type	Detached Single Family



Style Bungalow  
Status Active

### Community Information

Address 19 54129 Rge Road 275  
Area Rural Parkland County  
Subdivision Surrey Lane  
City Rural Parkland County  
County ALBERTA  
Province AB  
Postal Code T7X 3S4

### Amenities

Features Ceiling 10 ft., Closet Organizers, Crawl Space, Deck, Front Porch, Hot Water Natural Gas, Vaulted Ceiling, Vinyl Windows

### Interior

Interior Features ensuite bathroom  
Heating Forced Air-2, Natural Gas  
Fireplace Yes  
Stories 1  
Has Basement Yes  
Basement None, No Basement

### Exterior

Exterior Wood  
Exterior Features Airport Nearby, Golf Nearby, Landscaped, Private Setting, Treed Lot  
Construction Wood  
Foundation Concrete Perimeter

### Additional Information

Date Listed November 14th, 2024  
Days on Market 149  
Zoning Zone 70

DATA IS DEEMED RELIABLE BUT IS NOT GUARANTEED ACCURATE BY THE REALTORS® ASSOCIATION OF EDMONTON. COPYRIGHT 2025 BY THE REALTORS® ASSOCIATION OF EDMONTON. ALL RIGHTS RESERVED. Trademarks are owned or controlled by the Canadian Real Estate Association (CREA) and identify real estate professionals who are members of CREA (REALTOR®, REALTORS®) and/or the quality of services they provide (MLS®, Multiple Listing Service®)

Listing information last updated on April 12th, 2025 at 4:47am MDT