

# \$0 - 110 1115 St. Albert Trail, St. Albert

MLS® #E4409584

**\$0**

0 Bedroom, 0.00 Bathroom,  
Retail on 0.00 Acres

Erin Ridge, St. Albert, AB

Newly Built Drive Thru Retail Units with Great Exposure, are available for lease in this Brand New 5.3 Acres Commercial Development. The units are 2009 square feet, more or less and, boast of the two side signage opportunity and, just across COSTCO. The Development is in rapidly growing community of Erin Ridge in St. Albert and, sees lot of traffic to high impact retailers just across the building/Plaza. The Landlord is open to lease unit to a any business that current zoning (CC) could accommodate. The Plaza is almost leased out with variety of retail and professional tenants.

Built in 2020

## Essential Information

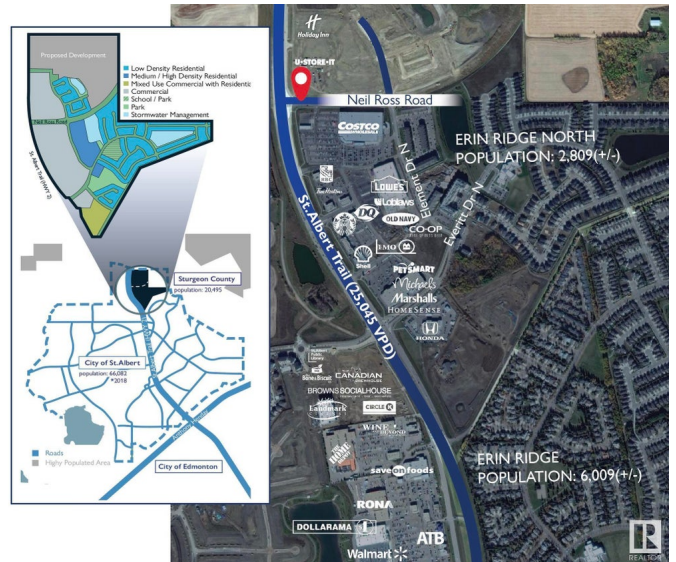
MLS® #	E4409584
Bathrooms	0.00
Acres	0.00
Year Built	2020
Type	Retail
Status	Active

## Community Information

Address	110 1115 St. Albert Trail
Area	St. Albert
Subdivision	Erin Ridge
City	St. Albert



■ Pylon Sign



County	ALBERTA
Province	AB
Postal Code	T8N 4K6

### **Exterior**

Exterior	Concrete
Construction	Concrete

### **Additional Information**

Date Listed	October 7th, 2024
Days on Market	186
Zoning	Zone 24

DATA IS DEEMED RELIABLE BUT IS NOT GUARANTEED ACCURATE BY THE REALTORS® ASSOCIATION OF EDMONTON. COPYRIGHT 2025 BY THE REALTORS® ASSOCIATION OF EDMONTON. ALL RIGHTS RESERVED. Trademarks are owned or controlled by the Canadian Real Estate Association (CREA) and identify real estate professionals who are members of CREA (REALTOR®, REALTORS®) and/or the quality of services they provide (MLS®, Multiple Listing Service®)

Listing information last updated on April 11th, 2025 at 7:02am MDT