

\$385,000 - 102 2 Avenue, Winfield

MLS® #E4406815

\$385,000

0 Bedroom, 0.00 Bathroom,
Land Commercial on 0.00 Acres

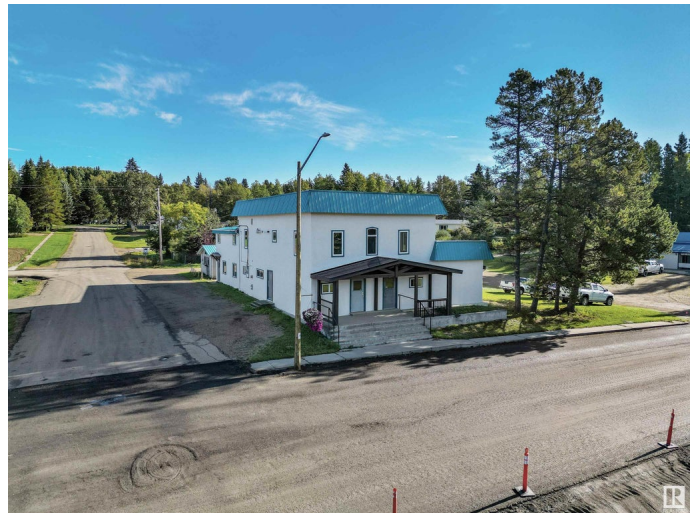
Winfield, Winfield, AB

Step into a piece of history with the former Winfield Hotel and former liquor store located on a spacious 100' x 120' lot. This distinctive property combines the charm of the original hotel with a thoughtfully designed addition, offering a blend of character and potential. Original Hotel + New Addition: The original structure has been expanded to include a second story over a partial basement and crawl space, providing extra room for a range of possibilities. Main Level: Open bar area, perfect for entertaining or conversion, with space for a pool table. A designated food prep area connected to both the original bar and the newly added caf  /deli space. Separate ladies  ™ and men  ™s washrooms, serving both the bar and caf  . Second Story: 9 rooms in total    5 original rooms and 4 constructed over the addition, each with its own bathroom. Second floor is approximately 90% complete. This property is perfect for investors and visionaries. With most of the heavy lifting done, it  ™s ready to finish and customize!

Built in 1932

Essential Information

MLS® #	E4406815
Price	\$385,000



Bathrooms	0.00
Acres	0.00
Year Built	1932
Type	Land Commercial
Status	Active

Community Information

Address	102 2 Avenue
Area	Winfield
Subdivision	Winfield
City	Winfield
County	ALBERTA
Province	AB
Postal Code	T0C 2X0

Exterior

Exterior	Stucco, Wood Frame
Construction	Stucco, Wood Frame

Additional Information

Date Listed	September 17th, 2024
Days on Market	215
Zoning	Zone 90

DATA IS DEEMED RELIABLE BUT IS NOT GUARANTEED ACCURATE BY THE REALTORS® ASSOCIATION OF EDMONTON. COPYRIGHT 2025 BY THE REALTORS® ASSOCIATION OF EDMONTON. ALL RIGHTS RESERVED. Trademarks are owned or controlled by the Canadian Real Estate Association (CREA) and identify real estate professionals who are members of CREA (REALTOR®, REALTORS®) and/or the quality of services they provide (MLS®, Multiple Listing Service®)

Listing information last updated on April 20th, 2025 at 8:17am MDT